

## OUR MEMBERS



## CONTACT

ITxPT Association  
Rue Sainte-Marie, 6  
1080 Brussels  
info@itxpt.org  
anders.selling@itxpt.org

## FOLLOW ITxPT !



[www.itxpt.org](http://www.itxpt.org)

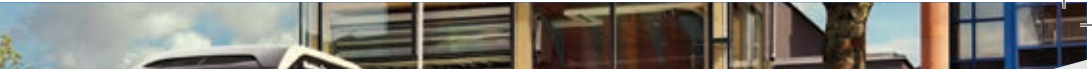


# ITxPT

Information Technology for Public Transport

Deploying standardised,  
interoperable and cost-efficient  
IT architecture





Membership	Strategic	Principal	Associated
Public transport authorities	<b>*From 2 k€</b> /year to 10k€/year	Direct access to Strategic level	<b>Free</b> with letter of support
Public transport operators	<b>15k€</b> /year	<b>*From 2 k€</b> /year to 10k€/year	<b>Free</b> with letter of support
Industry SME	<b>20k€</b> /year	<b>10 k€</b> /year	<b>2 k€</b> /year
Industry LTE	<b>30k€</b> /year	<b>20 k€</b> /year	<b>2 k€</b> /year

*\* PTO/PTA Fee Calculation*  
*Up to 200 buses: 2k€, from 201 to 500 buses: 5k€, from 501 to 800 buses: 8k€, over 800 buses: 10k€*

Documentation Center	Strategic	Principal	Associated	Non members
General information	✓	✓	✓	✓
Specifications & Guidelines	✓	✓	✓	✓
ITxPT label - Catalogue	✓	✓	✓	✓
ITxPT label - Procedure	✓	✓	✓	✓
ITxPT label - Technical platform	✓	✓	✓	✓
ITxPT label - Test templates	✓	✓	–	–
ITxPT label - Tools	✓	✓	–	–
Working groups	✓	✓	✓	✓
Association documents - General Assemblies	✓	✓	✓	–
Association documents - Workshops	✓	✓	✓	–
Association documents - Boards	✓	–	–	–



In 20 years, ITSs have become critically important to public transport, greatly contributing to the operational performance of travel, safety, and customer experience quality.

The Information Technology for Public Transport Association fosters the adoption of a Plug-and-Play IT architecture, through the deployment of standards and best practices.

Federating the whole value chain of public transport stakeholders, ITxPT provides integration and testing platforms allowing the verification of modules' compatibility under actual operating conditions.

Public Transport authorities and operators can confirm that their IT architectures are consistent as a whole, by ensuring that modules from different suppliers work well together in Plug & Play mode.

The ITxPT platform is the unique integrated European IT platform to specify, test, qualify and showcase IT solutions. The ITxPT platform is hosted in the centre of Paris offering an easy access to all European PT stakeholders.

Benefits	Strategic	Principal	Associated	Non members
<b>Documentation</b> Access to ITxPT Wiki (access depending on membership level)	✓	✓	✓	✓
<b>Technical support</b> Technical explanations, answers to technical questions	✓	✓		
<b>Events</b> Participate in the ITxPT community (workshop, website, brochure, exhibitions, tours...)	✓	✓	✓	–
<b>Working Groups</b> Participate in working groups Draft specification Approve final specifications	✓ ✓ ✓	✓ ✓ –	– – –	– – –
<b>Use of ITxPT Laboratory</b> Physical access to platforms Remote access to platforms	<b>10 days</b> /year <b>50 days</b> /year	<b>2 days</b> /year <b>10 days</b> /year	<b>1 K€</b> /day <b>0,5 K€</b> /half-day	<b>1 K€</b> /day <b>0,5 K€</b> /half-day
<b>Compliance Validation</b> Validation of units (modules, vehicles) in order to receive the ITxPT label and inclusion in reference catalogue	<b>4 units</b> /year 4k€/additional	<b>2 units</b> /year 5k€/additional	<b>5 K€</b> /module <b>20 K€</b> /vehicle type	<b>5 K€</b> /module <b>20 K€</b> /vehicle type
<b>Reference installation in the ITxPT Laboratory</b> Permanent Installation of modules in the ITxPT Laboratory (hardware or software)	✓	–	–	–
<b>Governance</b> Eligible to Executive Board	✓	–	–	–